



Carhartt® Women's Clarksburg Full-Zip Hoodie CT102788



This hoodie has the soft feel of a favorite sweatshirt with the warmth and durability that rivals a jacket.

- 10.5-ounce, 55/45 cotton/poly blend
- Attached three-piece hood with drawcord closure
- Full-length brass front zipper
- Two front hand warmer pockets
- Stretchable, spandex-reinforced, rib knit cuffs and waistband
- Carhartt label sewn on left hand warmer pocket
- Relaxed fit

CARE INSTRUCTIONS

Machine wash cold like colors, Do not bleach, Tumble dry medium, Cool iron, Do not dry clean

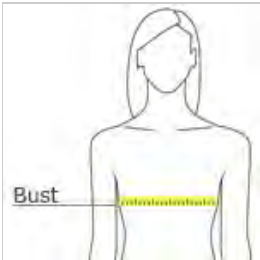


front



back

HOW TO MEASURE



BUST

Measure under the arm and around the fullest part of the bust with arms down, keeping tape horizontal.

SIZE CHART

	XS	S	M	L	XL	2XL
Size	2	4/6	8/10	12/14	16/18	20/22
Bust	32-33	34-35	36-37	38 1/2- 40	41 1/2-43 1/2	45 1/2- 47 1/2

COLOR INFORMATION



Black



Carbon Heather



Navy

PRODUCT DETAILS

DEVON & JONES®

DG220W

Devon & Jones Ladies' Pima-Tech™ Oxford Piqué Polo

MSRP (A): \$30.00

Features

- Birdseye flat knit collar
- Self fabric open placket
- Three-quarter length sleeves with slits
- Side slits

Fabric

- 4.75 oz./yd² / 160 gsm, 53% combed Pima cotton, 47% polyester
- Jet melange piqué with moisture-wicking and UV protection performance

Sizes

- XS - 3XL

Product Specifications

	XS	S	M	L	XL	2XL	3XL
BODY WIDTH	17	18	19.5	21.5	23	25	27
FULL BODY LENGTH	23.625	24.125	25.125	26.125	27.125	28.125	28.625
NECK CIRCUMFERENCE	16	16.5	17	17.5	18	18.5	19
SLEEVE LENGTH	21.5	22.5	23.5	24.5	25.5	26.5	27

Size Chart

	XS	S	M	L	XL	2XL	3XL
CHEST	31-32	33-35	36-38	39-42	43-45	46-49	50-53

3 Available Colors



Burgundy
Heather
PMS
209c



Drk Grey
Heather
PMS
2332c



Navy Heather
PMS
532c



BACK VIEW



SIDE VIEW



PRODUCT DETAILS

DEVON & JONES®

DG478W

Devon & Jones Ladies' Manchester Fully-Fashioned Full-Zip Cardigan Sweater

MSRP (A): \$46.00

Features

- 1x1 rib at center front placket
- Contrast piping at center front placket and shoulders
- Two-way coil zipper at center front with faux leather pull
- 2x2 rib knit at sleeves and bottom opening

Fabric

- 8.9 oz./yd² / 300 gsm, 100% cotton jersey knit, 9 gauge

Sizes

- XS - 3XL






Product Specifications

	XS	S	M	L	XL	2XL	3XL
BODY WIDTH	16.50	17.50	19	21	22.50	24.50	26.50
FULL BODY LENGTH	25.50	26	27	28	29	30	30.50
SLEEVE LENGTH	30	31	32	33	34	35	35.5

Size Chart

	XS	S	M	L	XL	2XL	3XL
CHEST	31-32	33-35	36-38	39-42	43-45	46-49	50-53

5 Available Colors

				
Black/ Graphite PMS procblkc	Dk Grey Hth/ Blk PMS 2332c	French Blue/ Nvy PMS 2386c	Grape/ Navy PMS 7675c	Navy/ Graphite PMS 532c



BACK VIEW



SIDE VIEW





604 Zinfandel

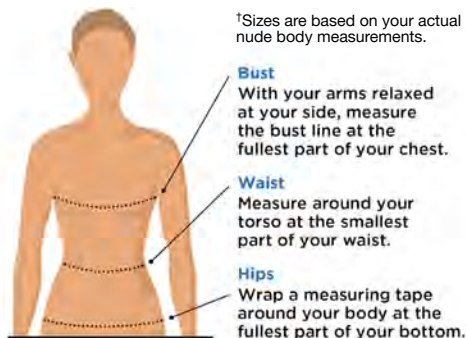
LADIES VENTILATED POLO

CGW437 S – 4XL MSRP \$42.00*

- 5.3 oz. 100% Polyester pique mesh stripe knit fabric
- Opti-Dri technology transfers moisture away from the body to keep you cool and dry
- Ventilated fabric allows air to flow freely through the fabric to keep you comfortable
- Rib knit collar
- 6-button placket with Callaway embossed buttons
- Double needle hemmed bottom with side vents
- Heat seal label provides tag-free comfort
- Contrast embroidered Chevron on back neck

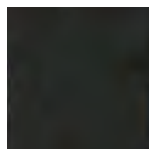


APPAREL

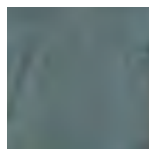


Size [†]	Number Size	Bust	Waist	Hips
XS	2	33	25½	35½
S	4-6	34½-35¼	26½-27	37½-38¼
M	8-10	36¼-37¼	28-29	39¼-40¼
L	12-14	38¾-40¾	30¾-32½	41¼-43¼
XL	16	42-43	33½-35	45-47
XXL	18	44	37-38	47-48
XXXL	20	46	40-42	48-52

* Prices apply to sizes S – XL. Please inquire for pricing on larger sizes



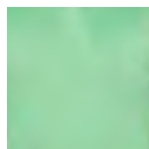
001 Black



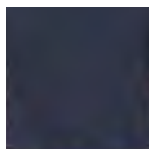
039 Quiet Shade



100 White



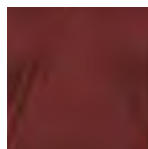
321 Vibrant Green



410 Peacoat



513 Purple Magic



604 Zinfandel



625 Salsa



821 Carrot