



410 Peacoat Navy

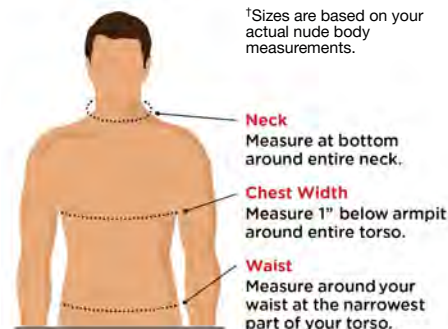
LONG SLEEVE CORE PERFORMANCE POLO

CGM670 S – 4XL MSRP \$54.00*

- 5.6 oz. 100% Polyester double knit mesh textured
- Opti-Dri technology transfers moisture away from the body to keep you cool and dry
- Rib knit collar
- 3-button placket with Callaway embossed buttons
- Heat seal label provides tag-free comfort
- Contrast embroidered Callaway logo on right sleeve



APPAREL



Shirts Sizes [†]	Neck	Chest Width	Waist	Shorts & Pants Waist Sizes
S	14½-15	36-38	28-30	28-30
M	15½-16	39-41	32-34	32-34
L	16½-17	42-44	36-38	36-38
XL	17½-18	45-47	40-42	40-42
XXL	18½-19	48-50	44-46	44-46
XXXL	19½-20	51-53	48-50	
4XL	20½-21	54-56	52-54	

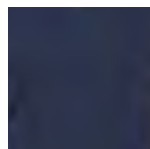
* Prices apply to sizes S – XL. Please inquire for pricing on larger sizes



001 Black



100 White



410 Peacoat Navy



027 Smoked Pearl

COMFORT & CONVENIENCE

- ∴ Moisture management and anti-microbial treatment provides wicking technology and resists bacteria
- ∴ Bar tacked sleeves for increased mobility
- ∴ Modern silhouette for a sleeker appearance
- ∴ Tagless neck label for added comfort

FABRIC

100% polyester

SIZES

Men's Sizes S-5XL

COLORS

010 Black, 040 Navy, 070 Royal, 115 Grey

GARMENT CARE

Machine wash cold with like colors. Gentle cycle. Do not bleach.
Tumble dry low. Do not iron. Do not dry clean. Do not use fabric softeners.

010 BLACK



040 NAVY



070 ROYAL



115 GREY



SPACE DYE PERFORMANCE TEE MEN'S 3764	S	M	L	XL	2XL	3XL	4XL	5XL	TOLERANCE
BODY LENGTH measure from neck (cb neck)	28	29	30	30¾	31½	32¼	33	33½	½ +/-
ACROSS SHOULDER imaginary shoulder points	17	17½	18½	19½	20½	21½	22½	23½	¼ +/-
CHEST WIDTH	20½	21½	22½	24½	26½	28½	30½	32½	½ +/-
BOTTOM OPENING WIDTH RELAXED 1/2	20½	21½	22½	24½	26½	28½	30½	32½	½ +/-
SLEEVE LENGTH FROM CB	18½	18¾	19¼	19¾	20½	21	21½	22	¼ +/-

KEY TO COMMONLY ABBREVIATED SPEC INFORMATION (ALL MEASUREMENTS ARE IN INCHES)

CB = CENTER BACK

CHEST 1 INCH DOWN = MEASURE THE FRONT OF THE GARMENT 1 INCH DOWN FROM THE ARMHOLE

1/2 = MEASURE ONLY THE FRONT OF THE GARMENT, THEN DOUBLE THAT MEASUREMENT TO GET THE TOTAL CIRCUMFERENCE

RELAXED = DO NOT STRETCH THE GARMENT IF IT HAS ELASTIC TO MEASURE, SIMPLY LEAVE THE ELASTIC RELAXED

STRETCHED = STRETCH THE GARMENT IF IT HAS ELASTIC TO MEASURE, MEASURE STRETCHED

COMFORT & CONVENIENCE

- Moisture management and anti-microbial treatment provides wicking technology and resists bacteria
- Three button placket
- Self-fabric collar
- Bar tacked sleeves for increased mobility
- Modern silhouette for a sleeker appearance
- Double needle cover stitch for added durability
- Tagless neck label for added comfort

FABRIC

100% polyester

SIZES

Men's Sizes S-5XL

COLORS

010 Black, 040 Navy, 070 Royal, 115 Grey

GARMENT CARE

Machine wash cold with like colors. Gentle cycle. Do not bleach.
Tumble dry low. Do not iron. Do not dry clean. Do not use fabric softeners.

010 BLACK



040 NAVY



070 ROYAL



115 GREY



SPACE DYE PERFORMANCE POLO MEN'S 3814	S	M	L	XL	2XL	3XL	4XL	5XL	TOLERANCE
BODY LENGTH measure from neck (cb neck)	28	29	30	30¾	31½	32¼	33	33½	½ +/-
ACROSS SHOULDER imaginary shoulder points	17	17½	18½	19½	20½	21½	22½	23	½ +/-
CHEST WIDTH	20¾	21¾	22¾	24¾	26¾	28¾	30¾	31¾	½ +/-
BOTTOM OPENING WIDTH RELAXED 1/2	20	21	22	24	26	28	30	31	½ +/-
SLEEVE LENGTH FROM CB	19½	19¾	20¼	20%	21½	22%	22%	23%	¼ +/-

KEY TO COMMONLY ABBREVIATED SPEC INFORMATION (ALL MEASUREMENTS ARE IN INCHES)

CB = CENTER BACK

CHEST 1 INCH DOWN = MEASURE THE FRONT OF THE GARMENT 1 INCH DOWN FROM THE ARMHOLE

1/2 = MEASURE ONLY THE FRONT OF THE GARMENT, THEN DOUBLE THAT MEASUREMENT TO GET THE TOTAL CIRCUMFERENCE

RELAXED = DO NOT STRETCH THE GARMENT IF IT HAS ELASTIC TO MEASURE, SIMPLY LEAVE THE ELASTIC RELAXED

STRETCHED = STRETCH THE GARMENT IF IT HAS ELASTIC TO MEASURE, MEASURE STRETCHED

COMFORT & CONVENIENCE

- :: 2-way zipper offers freedom of movement
- :: Adjustable drawstring at hood allows for a snug fit
- :: Wind flap and covered side pockets offer extra protection against the elements
- :: Side pockets zipper upward to close, protecting contents from inadvertently falling out
- :: Big sizes up to 5XL
- :: Suitable as corporate wear, for service & media professionals, outdoor & construction workers, or everyday rainwear
- :: Pair with New Englander Rain Pant style, 9198
- :: Youth, Children's & Toddler companion styles 8099, 7099, 6099
- :: Women's Companion style 5099

FABRIC

Wind & waterproof New Englander Polyurethane bonded to a woven backing

SIZES

Adult sizes XS-5XL

COLORS

010 Black/Grey, 031 Maroon/Black, 046 True Navy/Yellow, 060 Red/Grey, 139 Taupe/Navy, 150 Yellow/Navy, 264 True Navy/Grey, 317 Grey

GARMENT CARE

Do not machine wash. Wipe clean with a damp cloth. Line dry away from heat. Do not dry clean. Do not iron. Do not bleach.

GARMENT CARE

Embroidery: Ballpoint 70/10 needle. Tearaway backings. The area that is embroidered will no longer remain waterproof.

Heat Transfer: Maximum temperature recommended is 290°F.

Screen Printing: Automatic screen printing process with a dryer temperature of 290°F. Maximum number of colors recommended is 2. Full back has no entry zipper, if printing the mesh dimples will leave imprints. IC Nylon ink for both light and dark colors works best. Use catalyst.

010 BLACK/
GREY031 MAROON/
BLACK046 TRUE NAVY/
YELLOW060 RED/
GREY139 TAUPE/
NAVY150 YELLOW/
NAVY264 TRUE NAVY/
GREY

317 GREY

NEW ENGLANDER RAIN JACKET ADULT 9199	XS	S	M	L	XL	2XL	3XL	4XL	5XL	TOLERANCE
BODY LENGTH measure from neck (cb neck)	28	29	30	31	32	33	34	35	36	½ +/-
SHOULDER TO SHOULDER	20½	21	21½	22	23	24	25	26	27	½ +/-
BODY WIDTH Chest 1" DOWN 1/2	24	25	26	27	29	31	33	35	37	½ +/-
BOTTOM OPENING WIDTH RELAXED 1/2	23½	24½	25½	26½	28½	30½	32½	34½	36½	½ +/-
SLEEVE LENGTH FROM CB long	32	33½	34½	36	36½	37	37½	38	38½	½ +/-

KEY TO COMMONLY ABBREVIATED SPEC INFORMATION (ALL MEASUREMENTS ARE IN INCHES)

CB = CENTER BACK

CHEST 1 INCH DOWN = MEASURE THE FRONT OF THE GARMENT 1 INCH DOWN FROM THE ARMHOLE

1/2 = MEASURE ONLY THE FRONT OF THE GARMENT, THEN DOUBLE THAT MEASUREMENT TO GET THE TOTAL CIRCUMFERENCE

RELAXED = DO NOT STRETCH THE GARMENT IF IT HAS ELASTIC TO MEASURE, SIMPLY LEAVE THE ELASTIC RELAXED

STRETCHED = STRETCH THE GARMENT IF IT HAS ELASTIC TO MEASURE, MEASURE STRETCHED