

PRODUCT DETAILS



3220 primeplus

Columbia Men's Steens Mountain™ Full-Zip 2.0 Fleece

MSRP (A): \$55.98

Features

- Elastic cuffs
- Adjustable drawcord at bottom hem
- Zippered hand pockets
- Elevated patch logo on left chest

Fabric

- 7.4 oz., 100% polyester MTR filament fleece

Sizes

- S - 3XL

Product Specifications

	S	M	L	XL	2XL	3XL
BODY LENGTH	28	28	29	29	30	30
BODY WIDTH	21.5	23	25	27	29	31
SLEEVE LENGTH	35	36	37	38	39	39



BACK VIEW



SIDE VIEW



3 Available Colors



Black



Charcoal Hthr



Collegiate Navy

PRODUCT DETAILS



88189 prime

Core 365 Men's Brisk Insulated Jacket

MSRP (A): \$70.00

Features

- storm flap with snap closure at bottom
- brushed tricot-lined collar and chin guard
- centre front autolock zipper with reflective toggle
- roll-away hood
- elasticized cuffs
- lower brushed tricot-lined concealed zippered pockets
- thermal retention shockcord at hood and drop back hem
- audio port access through inside left pocket
- reflective piping at shoulder yoke and centre back yoke

Fabric

- INSULATION: 100 gsm in body and 60 gsm in sleeves
- 100% polyester microfibre twill, 3.4 oz./yd2/115 gsm
- LINING: 100% polyester brushed tricot in body

Sizes

- S - 5XL






Product Specifications

	S	M	L	XL	2XL	3XL	4XL	5XL
BODY LENGTH	27.25	28.25	28.75	29.25	29.75	30.25	30.75	31.25
BODY WIDTH	23	24.5	26	28	30	32	34	36
FULL BODY LENGTH	28.75	29.88	30.5	31.13	31.75	32.38	33	33.63
SLEEVE LENGTH	34.5	35.5	36.5	37.5	38.5	39.5	40.25	41

Size Chart

	S	M	L	XL	2XL	3XL	4XL	5XL
CHEST	35-38	39-41	42-45	46-49	50-52	53-56	57-60	61-64

5 Available Colors

				
Black	Classic Navy	Classic Red	Forest	True Royal
PMS procblckc	PMS 533c	PMS 201c	PMS 5535c	PMS 661c



PRODUCT DETAILS



88192 primeplus

Core 365 Men's Pinnacle Performance Long-Sleeve Piqué Polo

MSRP (A): \$22.00

Features

- matching flat knit collar
- spandex enhanced rib knit cuffs

Fabric

- 100% polyester pique, 4.1 oz./yd2/140 gsm
- Moisture wicking, antimicrobial and UV protection performance

Sizes

- S - 5XL

Product Specifications

	S	M	L	XL	2XL	3XL	4XL	5XL
BODY WIDTH	20.5	22	23.5	25	26.5	28	29.5	31
FULL BODY LENGTH	28	29.25	30	30.75	31.5	32.25	32.25	32.25
SLEEVE LENGTH	34	35	36	37	37.75	38.5	39	39.5

Size Chart

	S	M	L	XL	2XL	3XL	4XL	5XL
CHEST	35-38	39-41	42-45	46-49	50-52	53-56	57-60	61-64



BACK VIEW



SIDE VIEW



10 Available Colors

Black	Burgundy	Campus Gold	Campus Purple	Carbon	Classic Navy	Classic Red	Forest	True Royal	White
PMS procbkck	PMS 504c	PMS 123c	PMS 2617c	PMS 7540c	PMS 533c	PMS 201c	PMS 5535c	PMS 661c	PMS white



Nike Dri-FIT Micro Pique Polo. 363807



Stay cool when things heat up. Engineered with Dri-FIT fabric which provides moisture management technology. This comfortable micro pique polo has an exceptionally soft hand. The design features a flat knit collar, three-button placket, open hem sleeves. The contrast Swoosh design trademark is embroidered on the left sleeve. Made of 4.4-ounce, 100% polyester.

CARE INSTRUCTIONS

Machine wash cold. wash inside out; wash with like colors. Do not use softners. Do not use bleach. Tumble dry low. Do not iron.do not dry clean

[Tips For Effectively Screen Printing Polyester Fabrics](#)

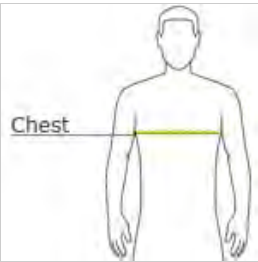


front



back

HOW TO MEASURE


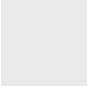


CHEST WIDTH
Measure under the arm and around the fullest part of the chest with arms down, keeping tape horizontal.

SIZE CHART

	3XL	4XL	XS	S	M	L	XL	2XL
Chest	53 1/2 - 58	58 - 63	32-35	35 - 37 1/2	37 1/2 - 41	41 - 44	44 - 48 1/2	48 1/2 - 53 1/2

COLOR INFORMATION

 Action Green	 Anthracite PMS 432C	 Black PMS PROCESS BLACK C	 Blue Sapphire PMS 661C	 Cornsilk PMS 1205C	 Court Blue PMS 295C	 Fir	 French Blue PMS 654C	 Fusion Pink PMS 675C	 Lawn PMS 5777C	 Lucky Green PMS 348C
 Mean Green PMS 368C	 Navy PMS 296C	 Night Purple PMS 519C	 Pale Vanilla	 Team Green PMS 627C	 Team Orange PMS 7417C	 Team Red PMS 188C	 Tidal Blue PMS 7468C	 Trails End Brown PMS 7519C	 University Gold PMS 137C	 Valor Blue PMS 659C
 Varsity Red PMS 704C	 White	 Wolf Grey PMS 429C								



Nike Dri-FIT Vertical Mesh Polo. 637167



Designed for the ultimate in performance, this polo has a soft drape and a vertical mesh texture. Dri-FIT moisture management technology provides breathable comfort during and after play. Features a self-fabric collar and three-button placket. A contrast Swoosh design trademark is embroidered on the left sleeve. Made of 4.4-ounce, 100% polyester Dri-FIT fabric.

CARE INSTRUCTIONS

Machine wash cold (30C), wash inside out, wash with like colors, do not use softeners, do not use bleach. Tumble dry low. Do not iron. Do not dry clean.

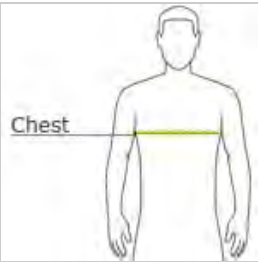


front



back

HOW TO MEASURE



CHEST WIDTH
Measure under the arm and around the fullest part of the chest with arms down, keeping tape horizontal.

SIZE CHART

	4XL	XS	S	M	L	XL	2XL	3XL
Chest	58 - 63	32-35	35 - 37 1/2	37 1/2 - 41	41 - 44	44 - 48 1/2	48 1/2 - 53 1/2	53 1/2 - 58

COLOR INFORMATION

Action Green
PMS 368C

Anthracite
PMS 447 C

Black
PMS PROCESS
BLACK C

Blustery
PMS 3155C

Brisk Blue
PMS 7689C

Cool Grey
PMS 424C

Court Purple
PMS 7680 C

Gym Blue
PMS 294 C

Marine
PMS 296C

Old Royal
PMS 2748C

University Red
PMS 200C

Volt

White

PRODUCT DETAILS



UNDER ARMOUR.

1246888

Under Armour CGI Dobson Soft Shell

MSRP (C): \$124.99

Features

- ribbed cuffs & waist to shut out the cold
- left chest media pocket
- secure zippered hand pockets
- performance loose fit
- UA logo on left chest and hood; UA storm® logo on right cuff

Fabric

- 12 oz., face: 60% cotton, 40% polyester; back: 100% polyester
- UA Storm® gear uses a DWR finish to repel water without sacrificing breathability
- ColdGear® infrared technology uses a soft, thermo-conductive inner coating to absorb and retain your own body heat
- Windproof construction shields you from the elements
- bonded 3-layer stretch soft shell material with a warm brushed inner layer

Sizes

- S - 3XL

Product Specifications

	S	M	L	XL	2XL	3XL
BODY LENGTH	29.5	30	30.5	31.5	32.5	33.5
BODY WIDTH	19	20.5	22	23.5	25	26.5

Size Chart

	S	M	L	XL	2XL	3XL
CHEST	34-36	38-40	42-44	46-48	50-52	54-56

3 Available Colors



Asphalt Hthr
_006



Midnight Navy
_41



Tr Gray Hthr
_02



BACK VIEW



SIDE VIEW

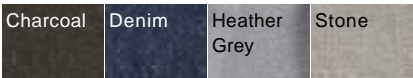


Burnside - Long Sleeve Solid Flannel Shirt - 8200



- 5.4 oz. (US), 9 oz. (CA), cotton/polyester CVC fabric
- Two flap pockets with button closure
- Adjustable one-button cuffs
- Half-moon back yoke with locker loop

Colors



Finished Measurements

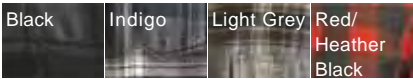
	S	M	L	XL	2XL	3XL
Body Length Back	30 1/2	31	31 1/2	32	32 1/2	33 1/4
Body Width	20	21 1/2	23	24 1/2	26	28 1/4
Sleeve Length (From Center Back)	34	35	36	37	38	39 1/2

Burnside - Snap Front Long Sleeve Plaid Flannel Shirt - 8219



- 5.4 oz., cotton/polyester CVC fabric
- Two flap pockets with snap closure
- Dyed-to-match snaps
- Inside chest pocket
- Half back yoke
- Modern fit
- Snap closure on cuffs

Colors



Finished Measurements

	S	M	L	XL	2XL	3XL
Body Length Back	30 1/2	31	31 1/2	32	32 1/2	33 3/4
Body Width	20	22	23 1/2	25	26 1/2	28 3/4
Sleeve Length (From Center Back)	34	35	36	37	38	39

PRODUCT DETAILS



CE100

Core 365 Men's Pilot Textured Ottoman Polo

MSRP (A): \$20.00

Features

- Matching flat knit collar
- Three-button placket
- Rib-knit cuffs
- Side slits

Fabric

- 4.1 oz/yd² / 139 gsm, 100% polyester ottoman with moisture-wicking, anti-microbial and UV protection performance

Sizes

- S - 5XL

Product Specifications

	S	M	L	4XL	5XL
BODY WIDTH	20	21.5	23.5	31	33
FULL BODY LENGTH	28.125	29.125	30.125	33.625	34.125
NECK CIRCUMFERENCE	16.5	17.5	18.5	22.5	23.5
SLEEVE LENGTH	19.5	20.125	20.75	23.25	23.875

Size Chart

	S	M	L	4XL	5XL
CHEST	35-38	39-41	42-45	57-60	61-64

3 Available Colors



Carbon

Classic Navy

Forest

PMS
7540c

PMS
533c

PMS
5535c



BACK VIEW



SIDE VIEW





513 Purple Magic

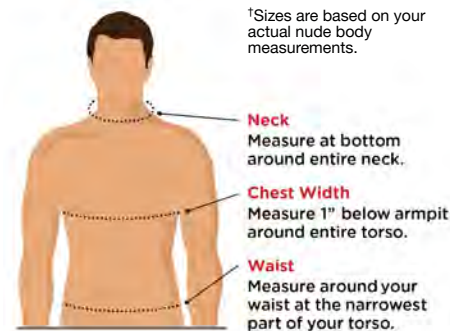
VENTILATED POLO

CGM451 S – 4XL MSRP \$42.00*

- 5.3 oz. 100% Polyester pique mesh stripe knit fabric
- Opti-Dri technology transfers moisture away from the body to keep you cool and dry
- Ventilated fabric allows air to flow freely through the fabric to keep you comfortable
- Rib knit collar
- 3-button placket with Callaway embossed buttons
- Double needle hemmed bottom with side vents
- Heat seal label provides tag-free comfort
- Contrast embroidered Callaway logo on right sleeve

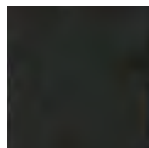


APPAREL

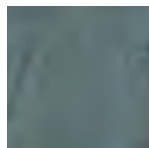


Shirts Sizes [†]	Neck	Chest Width	Waist	Shorts & Pants Waist Sizes
S	14½-15	36-38	28-30	28-30
M	15½-16	39-41	32-34	32-34
L	16½-17	42-44	36-38	36-38
XL	17½-18	45-47	40-42	40-42
XXL	18½-19	48-50	44-46	44-46
XXXL	19½-20	51-53	48-50	
4XL	20½-21	54-56	52-54	

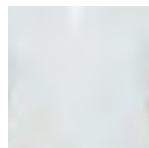
*Prices apply to sizes S – XL. Please inquire for pricing on larger sizes



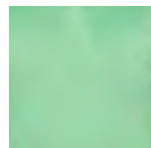
001 Black



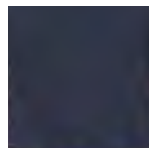
039 Quiet Shade



100 White



321 Vibrant Green



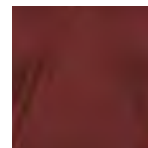
410 Peacoat



424 Medium Blue



513 Purple Magic



604 Zinfandel



625 Salsa



821 Carrot