

FLAG #1

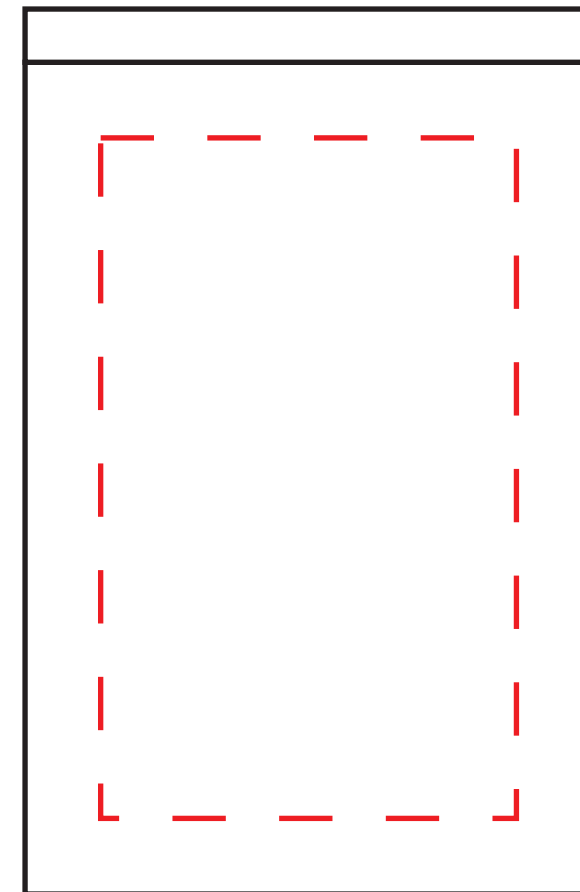
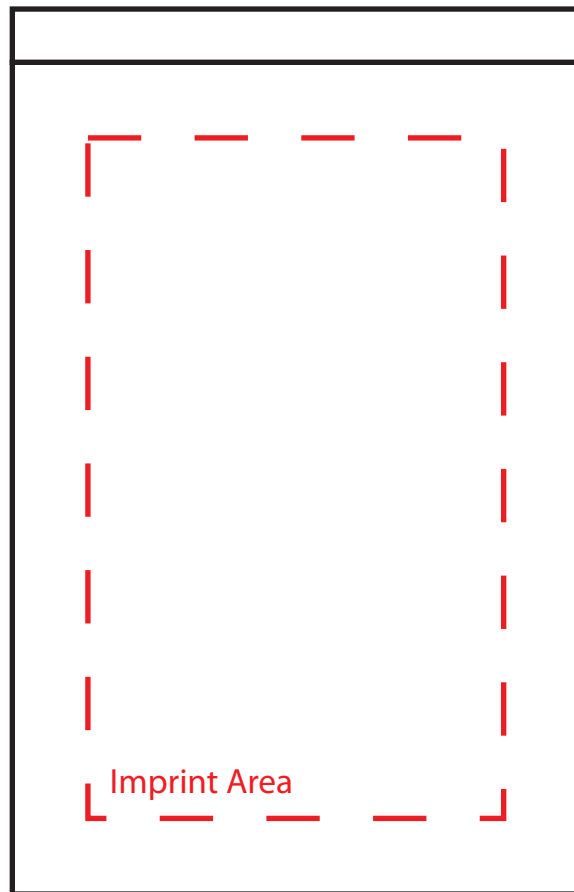
FLAG #2

To be used properly, this template must be opened in a vector based graphic program like Adobe Illustrator.

5.5-9" Metal Telescopic
Flagpole with Two Single
Reverse Flags
(100% Scale)
DSF33S
Imprint Area: 2" x 3.5"

Notes:

- Keep all artwork away from the edge (reflected by the **red dotted line**) of the template.
- Any artwork that is intended to run off the edge requires bleed past the edge (reflected by the **blue dotted line**).
- **Use ONLY Pantone Solid Coated colors**
- **Convert all text to outlines**



Bleed Area