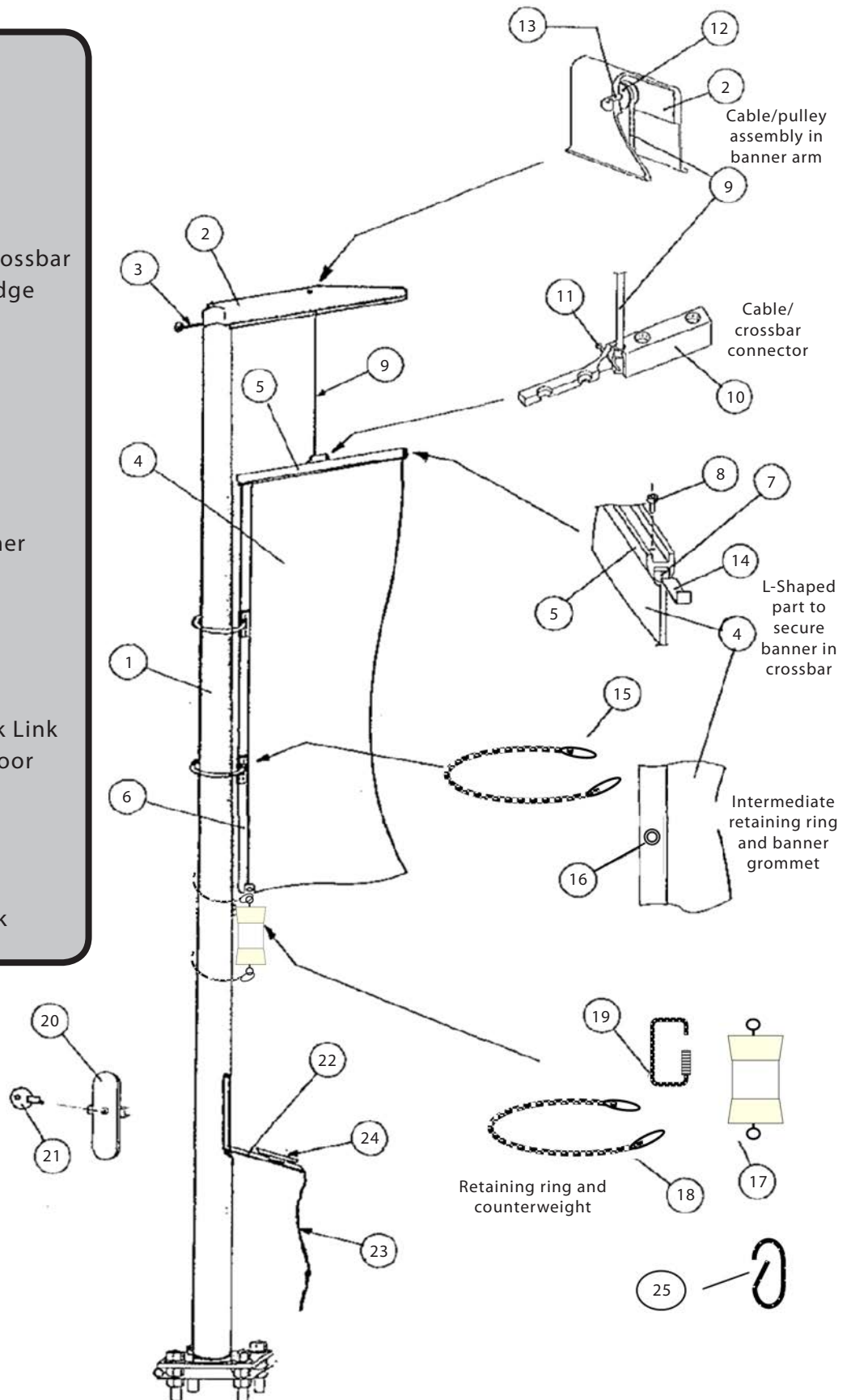


INSTRUCTIONS

Banner Pole with Internal Halyard

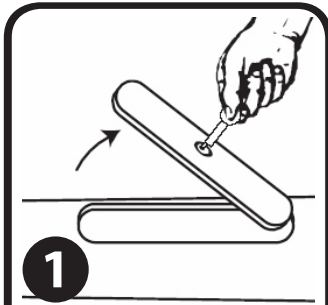
Part Listing

1. Pole
2. Banner Arm
3. Screw
4. Banner
5. Aluminum Banner Crossbar
6. Reinforced Banner Edge
7. Banner Sleeve
8. Screw
9. Stainless Steel Cable
10. Cable Connector
11. Pin
12. Aluminum Pulley
13. Aluminum Pin
14. L-Shaped Metal Banner Holder
15. Retaining Ring
16. Grommet
17. Counterweight
18. Retaining Ring
19. Counterweight Quick Link
20. Removable Access Door
21. Door Key
22. Tilting Arm
23. Halyard
24. Cleat
25. Flag Clip / Snap Hook



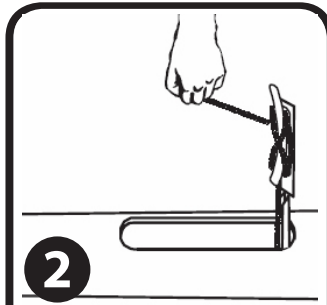
WARNING: At no time should the stainless steel cable be folded or metal strands be broken.

First, unpack all parts. Then completely unscrew access cover lock.



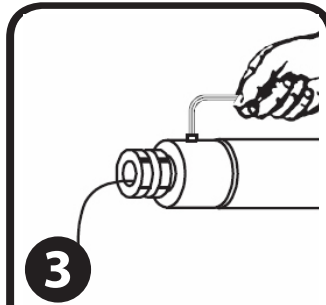
1

Completely unscrew the access door lock using the supplied special key and remove access door by rotating it 90 degrees.



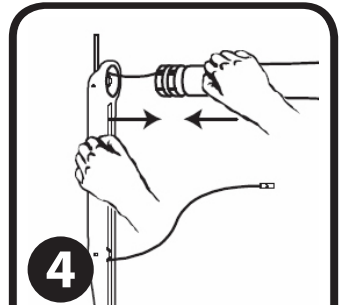
2

Pull tilting cleat outward and release halyard.



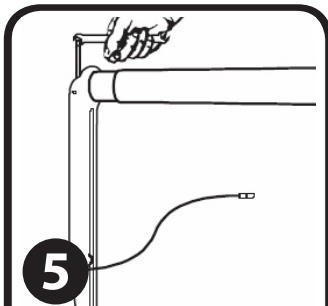
3

Verify that the ball bearing is properly secured in the cast aluminum socket.



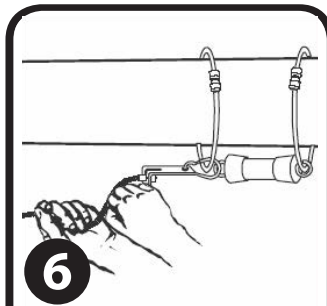
4

Position banner arm rounded end onto rotating ball bearing truck assembly.



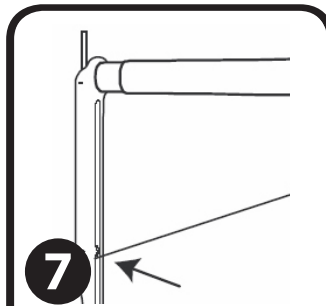
5

Unscrew screw at end of banner arm so that banner arm can slide with limited pressure over ball bearings.



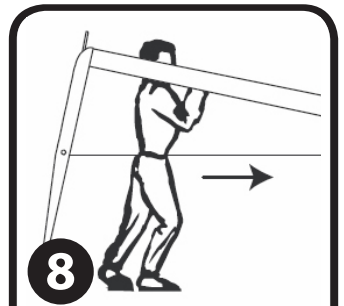
6

Connect the halyard cable extremity to the counterweight and retaining ring using supplied L-Shaped part.



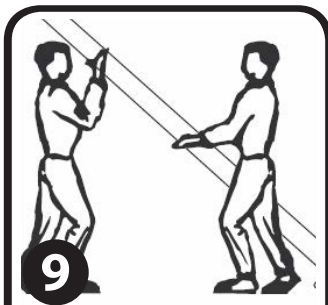
7

Verify that halyard cable is properly positioned in the pulley which is located in the middle of the banner arm.



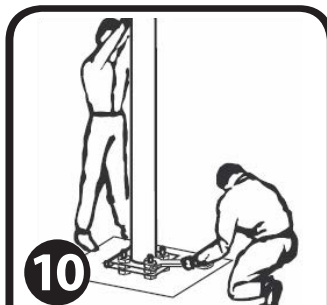
8

Installer #1 lifts the top of the pole by grabbing it just below the banner arm.



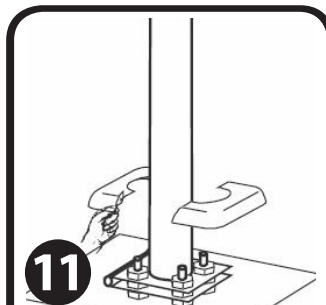
9

Installer #2 helps lift the pole to vertical position.



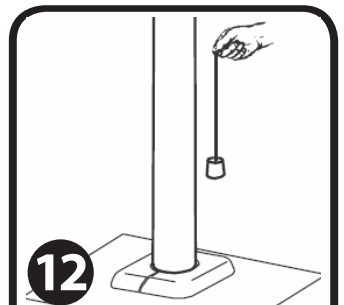
10

Installer #1 keeps the pole in vertical position while installer #2 secures the tilting base with washers and nuts.



11

Verify that pole is perfectly vertical and adjust/tighten nuts below the pole plate to achieve verticality.



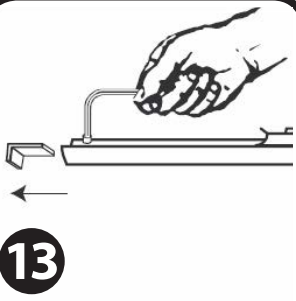
12

Assemble base cover around the pole with the two nuts and bolts, and then drop the cover over the top of the tilting base.



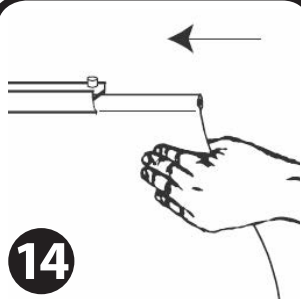
This product is for outdoor promotional use only and should not be left out in extreme weather conditions. Please use common sense guidelines and do not display this product outdoors when extreme winds or storms may be present.

WARNING: Never raise banner crossbar without a banner, otherwise one may not be able to lower it.
First, unpack banner and remove aluminum banner crossbar from pole's banner arm.



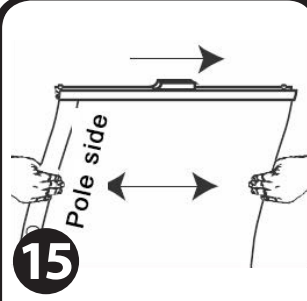
13

Unscrew both screws at the ends of the aluminum banner crossbar, but do not remove them. Remove the L-Shaped part.



14

Insert rigid tube in banner sleeve. Slide banner sleeve into crossbar, making sure the grommets are on pole side.



15

Center the banner on the crossbar.



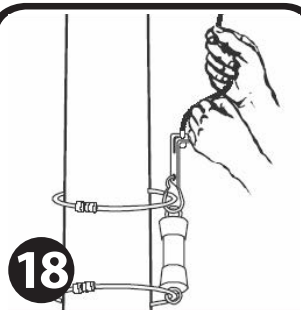
16

Insert steel L-Shaped part at both ends of crossbar, making sure that the flat metal section is above the banner sleeve.



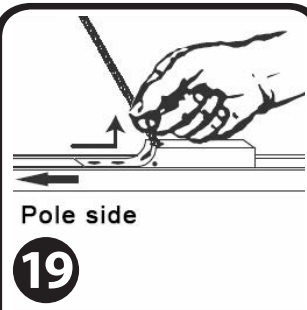
17

Tighten both screws at the end of the crossbar to secure the banner in the crossbar.



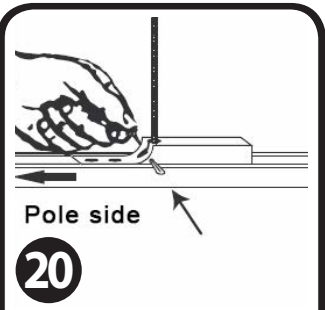
18

Detach cable from counterweight.
DO NOT LET GO OF CABLE.



19

Secure cable into cable connector on crossbar.



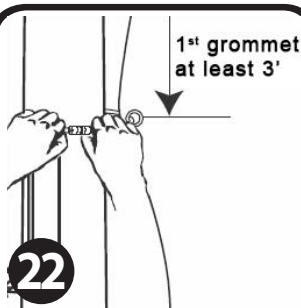
20

Insert safety pin to secure cable in connector.



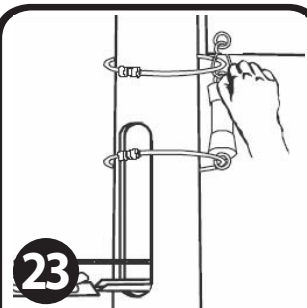
21

Raise banner up to first banner grommet. First grommet should be at least three feet from banner top.



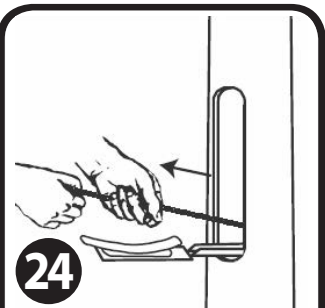
22

Insert a retaining ring in grommet and secure retaining ring around the pole with a snap hook. Repeat for other grommets.



23

Secure counterweight to banner's bottom grommet using quick link and connect retaining ring. Install last retaining ring on counterweight's bottom eyelet.



24

Raise banner. Ensure that crossbar is fully inserted in banner arm. Ensure halyard is tight, then secure it to cleat, push tilting cleat inside pole, and lock cover.