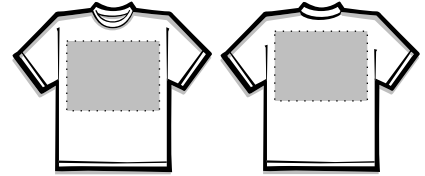
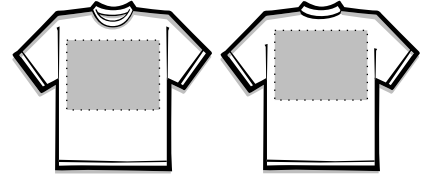


Standard Imprint Areas

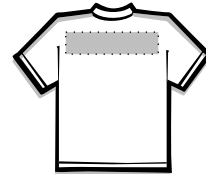
Adult Small through Adult X-Large (full front/full back):
14" (wide) x 15" (high); maximum
12" (wide) x 10" (high); standard



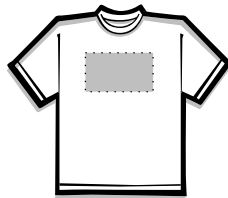
Youth X-Small through Youth Large (full front/full back):
9" (wide) x 9" (high)



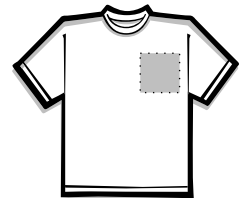
Across Shoulders (full back):
Adult: 14" (wide) see full back sizes for height.
Youth: 9" (wide) see full back sizes for height.



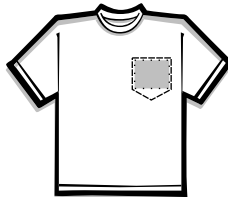
Center Chest:
6" wide x 6" high



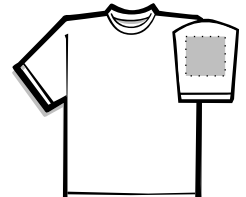
Left Chest:
3.5" wide x 3.5" high



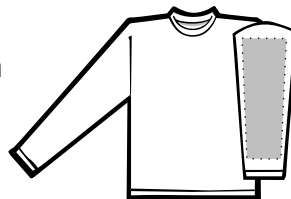
On Pocket Print:
3" wide x 3" high



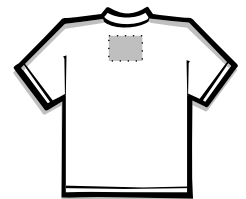
Short Sleeve:
3.5" wide x 4" high



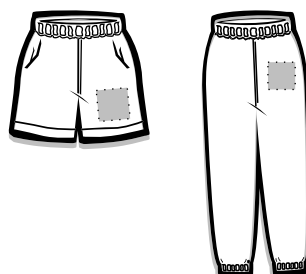
Long Sleeve:
3.5" wide x 12" high



Back Collar Tab:
3" wide x 3" high



Pants/Shorts (thigh):
4" wide x 4" high



Caps:
4" wide x 2" high

